

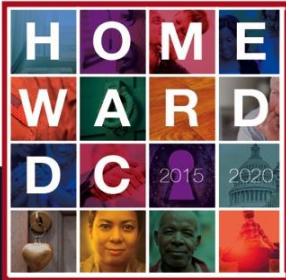
# A FRESH START TO ENDING FAMILY HOMELESSNESS



**Short –Term Family Housing Design Overview**  
**April 2016**

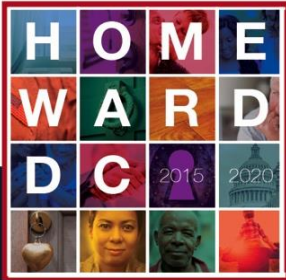
Ward 1  
2105-2107 10<sup>th</sup> Street, NW | Washington DC 20001





## Purpose of Tonight's Meeting

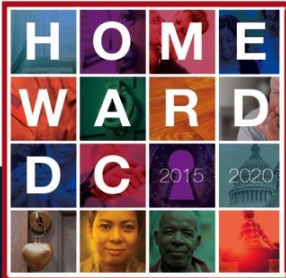
- Continue to provide information and hear from you
- Share process updates and current site designs
- Initiate discussion about a Ward 1 Community Advisory Committee and design elements



## A FRESH START TO ENDING FAMILY HOMELESSNESS

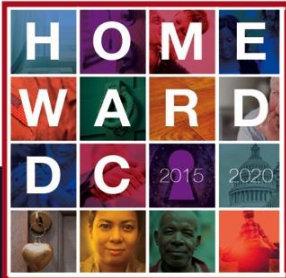
### Agenda

- **Brief Presentation (30 minutes)**
  - What We've Heard from You Thus Far
  - Where Are We in the Process
  - Share Architectural Design
- **Small Group Discussions (45 minutes)**
  - Part 1: Discussion about Ward 1 Community Advisory Committee
  - Part 2: Provide initial feedback on desires for exterior features of architectural design
- **Wrap up & Next Steps**



## What We've Heard From You

- Broad support to close DC General and improve homeless services
- Commitment to a strategy where every ward plays a role
- Concerns about site selection process
- Concerns about the cost of the project and the terms of the lease
- Concerns about impact to schools and neighborhood
- Requests for a way to have a voice in the process



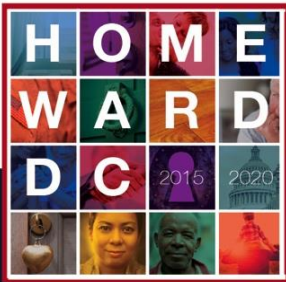
# A FRESH START TO ENDING FAMILY HOMELESSNESS

## Overall Timeline

- Begin Community Discussions (February 11)
- Council considers proposal (Hearing on March 17)
- Design Input meeting with community (April)
- Permits and zoning reviewed
- Sites developed
- Good Neighbor Agreements drafted
- Open New facilities (2018)
- Close DC General (2018)

## Where Are We Now

- Council is currently considering the proposal and will hold two votes (public hearing was held on March 17)
- Architects brought on board (Early Summer 2016)
- Permits and zoning will be reviewed
- Lease packages submitted to Council for approval (TBD)



# A FRESH START TO ENDING FAMILY HOMELESSNESS

## Strategy to End Homelessness in DC

**Prevent homelessness**  
by providing robust services

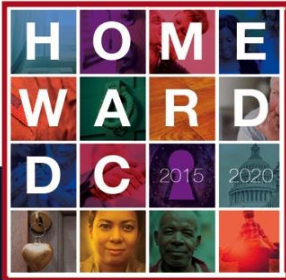


**Offer safe and dignified short-term housing**  
to people who experience homelessness



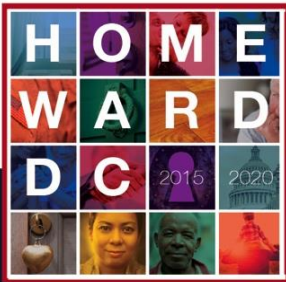
**Help people transition into housing ASAP**





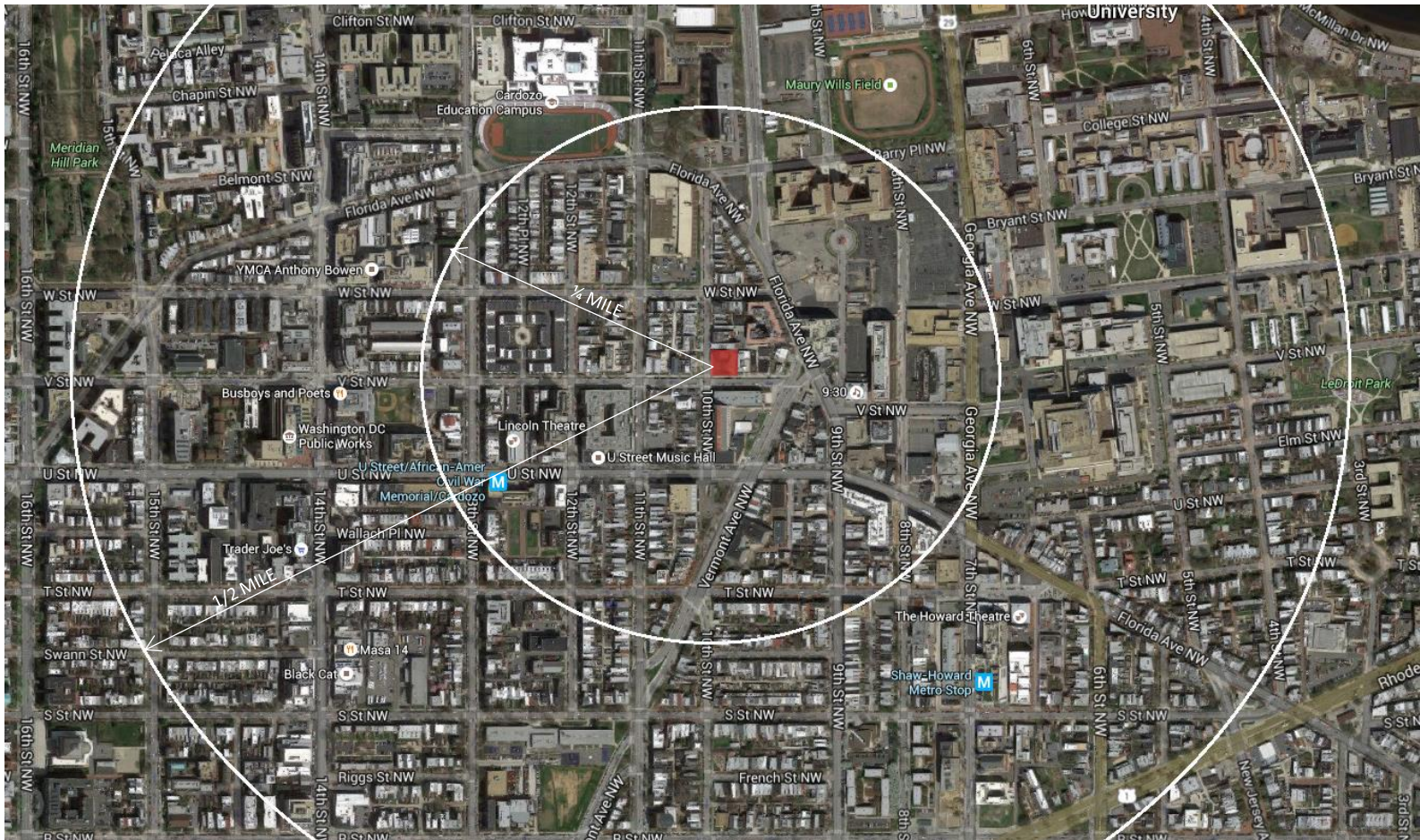
## Features in Design

- Outdoor playground and recreational space
- Age appropriate indoor recreation space
- Computer Labs
- Programming / Services Space
- All Sites are ADA Accessible



# A FRESH START TO ENDING FAMILY HOMELESSNESS

## Site Location

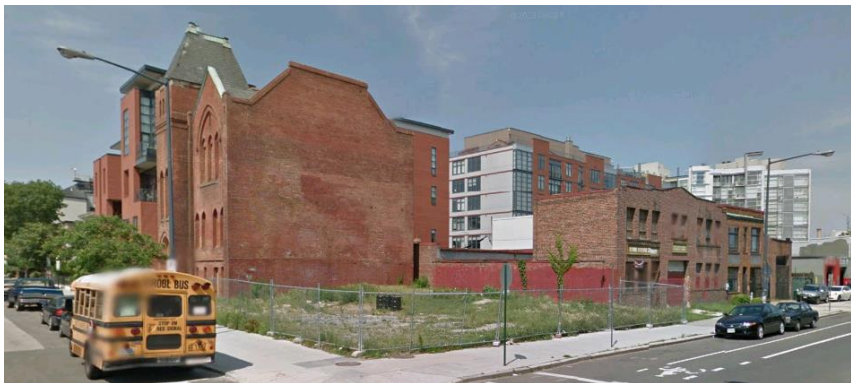






# A FRESH START TO ENDING FAMILY HOMELESSNESS

## Site Context

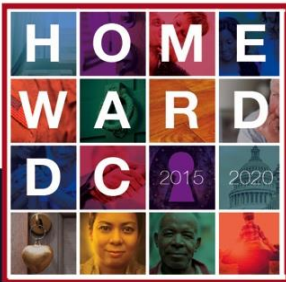




# A FRESH START TO ENDING FAMILY HOMELESSNESS

## Site Plan





# A FRESH START TO ENDING FAMILY HOMELESSNESS

## Ground Floor Plan

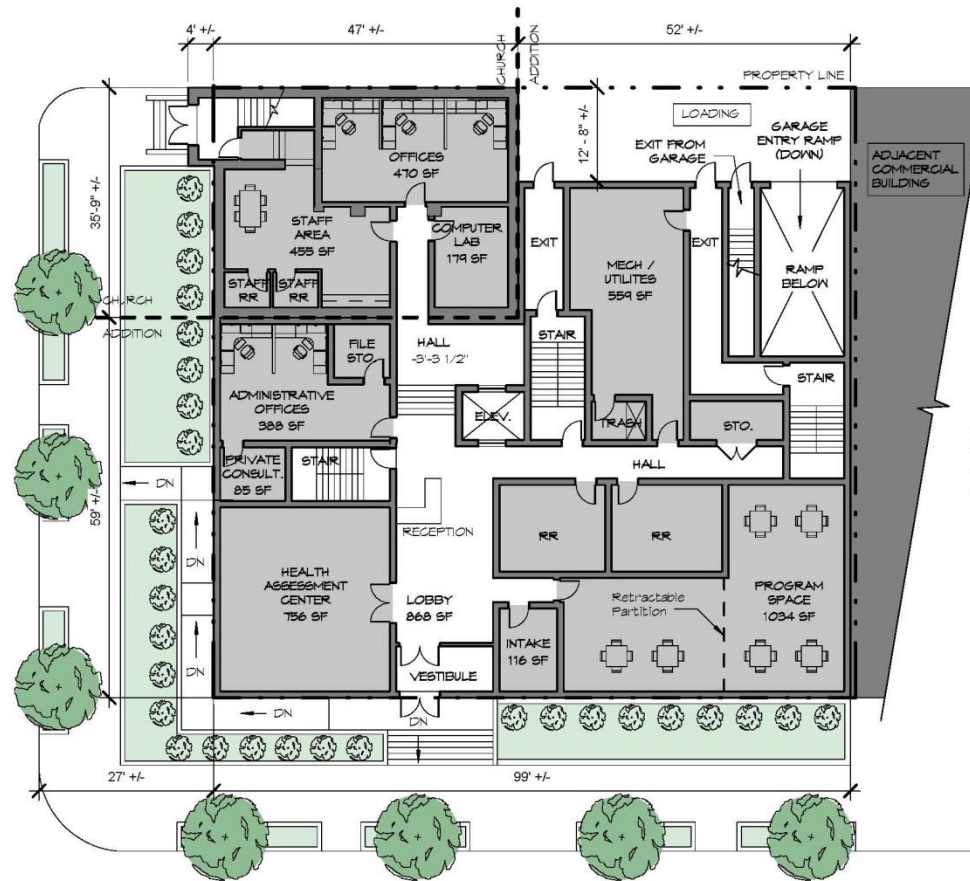
### Program Requirements

#### Administrative

- Grand Lobby
- Office (4 to 5)
- Intake
- Private Consult

#### Common Areas

- Program Space
- Computer Lab
- Health Assessment Center

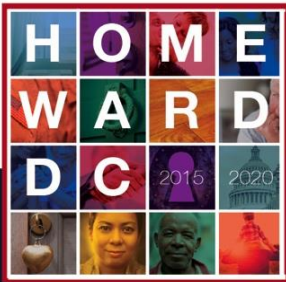


### Key

- Administrative / Bldg. Services
- Circulation / Lobby

SCALE: 1" = 16'-0"



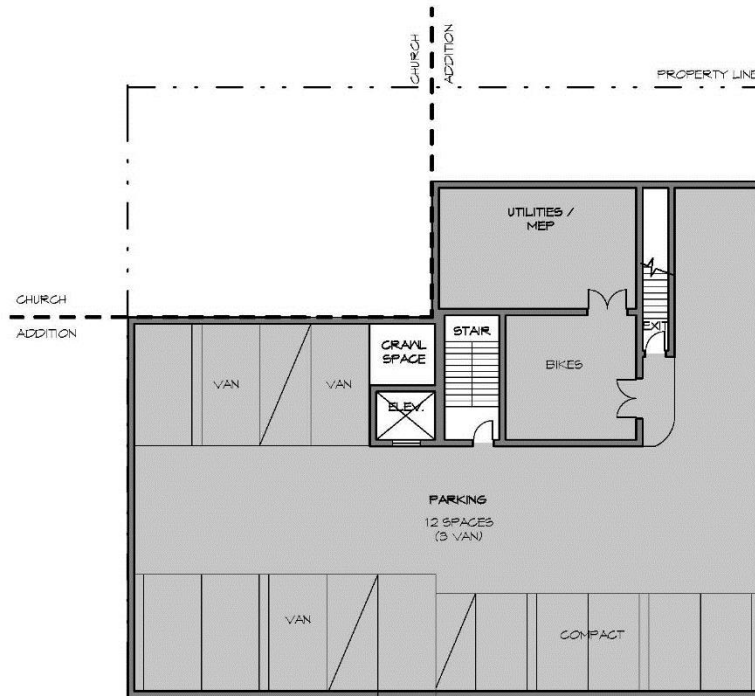


# A FRESH START TO ENDING FAMILY HOMELESSNESS

## Cellar Floor Plan

### Common Area Requirements

- Parking Spaces, including 3 van spaces
- Bike Storage

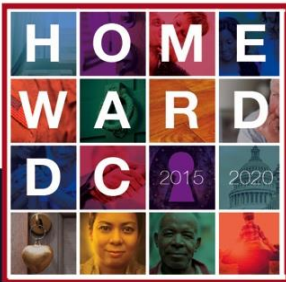


### Key

- Administrative / Bldg. Services
- Circulation / Lobby

SCALE: 1" = 16'-0"



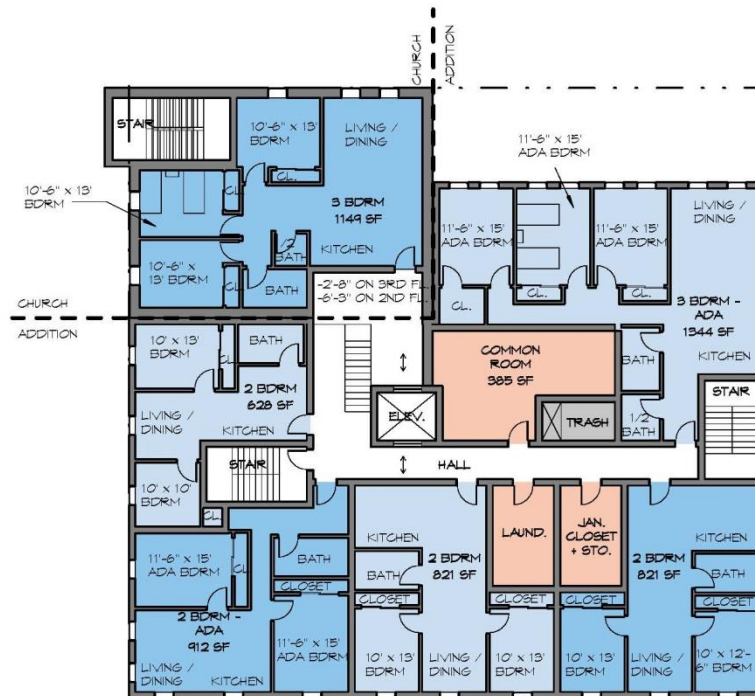


# A FRESH START TO ENDING FAMILY HOMELESSNESS

## Typical Floor Plan (Floors 2-3)

### Per Floor Requirements

- Monitoring Station
- Common Room
- Laundry Room
- Trash Room
- Janitors Closet

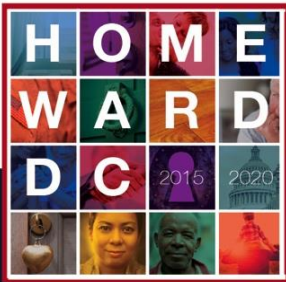


### Key

- Administrative / Bldg. Services
- Apartment
- Apartment
- Circulation / Lobby
- Resident Common Spaces

SCALE: 1" = 16'-0"



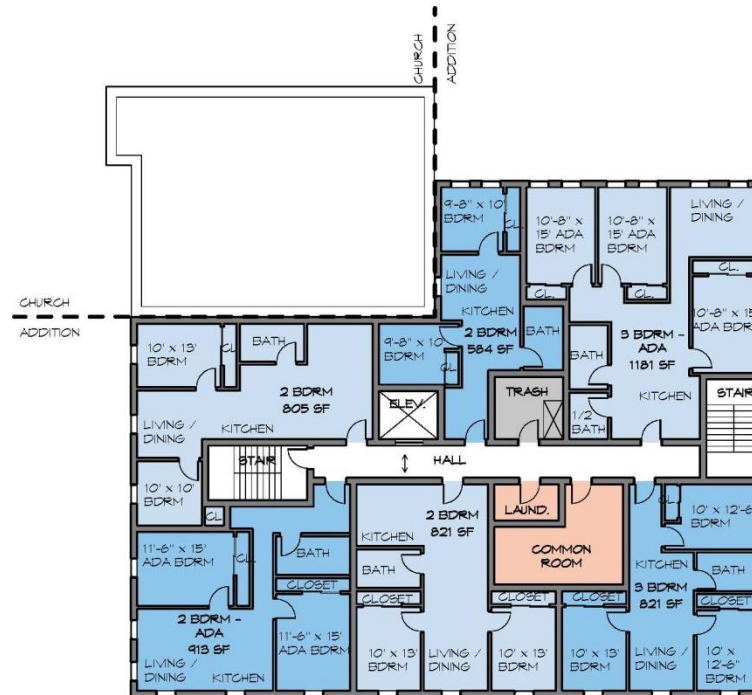


# A FRESH START TO ENDING FAMILY HOMELESSNESS

## Typical Floor Plan (Floors 4-5)

### Per Floor Requirements

- Monitoring Station
- Common Room
- Laundry Room
- Trash Room
- Janitors Closet

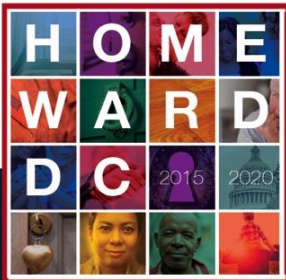


### Key

- Administrative / Bldg. Services
- Apartment
- Apartment
- Circulation / Lobby
- Resident Common Spaces

SCALE: 1" = 16'-0"





# A FRESH START TO ENDING FAMILY HOMELESSNESS

## 6th Floor Plan

### Per Floor Requirements

- Monitoring Station
- Common Room
- Laundry Room
- Trash Room
- Janitors Closet

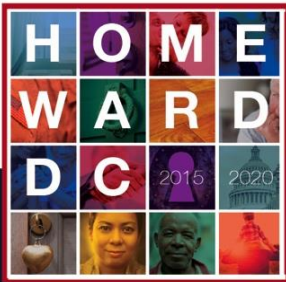


### Key

- Administrative / Bldg. Services
- Apartment
- Apartment
- Circulation / Lobby
- Green Space
- Resident Common Spaces

SCALE: 1" = 16'-0"





# A FRESH START TO ENDING FAMILY HOMELESSNESS

## Roof Plan

### Per Floor Requirements

- Mechanical Enclosure
- Play Area
- Green roof



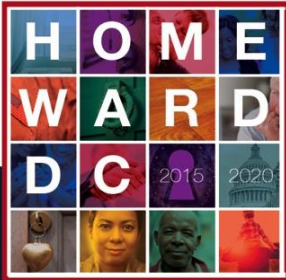
### Key

- Administrative / Bldg. Services
- Circulation / Lobby
- Green Space
- Play Area

SCALE: 1" = 16'-0"







# A FRESH START TO ENDING FAMILY HOMELESSNESS

## Examples of Exterior Materials



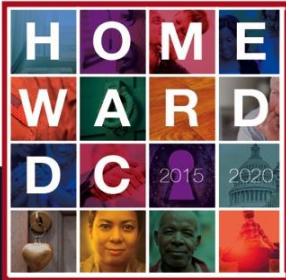
SIDING



BRICK



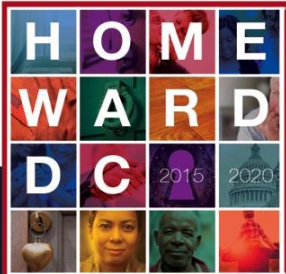
PANEL



# Small Group Discussions

*(45 minutes)*

- Part 1: Initiate a discussion about a Community Advisory Committee
- Part 2: Provide initial feedback on desires for exterior features of architectural design



## A FRESH START TO ENDING FAMILY HOMELESSNESS

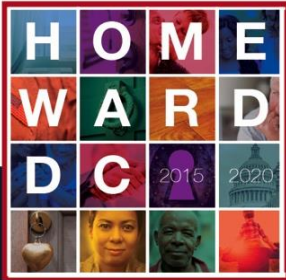
### For More Information

All information is posted on our website  
[mayor.dc.gov/HomewardDC](https://mayor.dc.gov/HomewardDC)

Or Contact us at:

Email: [DMHHS@dc.gov](mailto:DMHHS@dc.gov)

Call: 202-727-7973



# A FRESH START TO ENDING FAMILY HOMELESSNESS

## Delivery Schedule

Ward	Site	Construction Start	Completion
1	2105-2107 10 <sup>th</sup> Street, NW	Summer 2017	Fall 2018
2	810 Fifth Street, NW*	March 2015	February 2016
3	2619 Wisconsin Ave, NW	February 2017	May 2018
4	5505 Fifth Street, NW	November 2016	January 2018
5	2266 25th Place, NE	February 2017	January 2018
6	700 Delaware Avenue, SW	February 2017	May 2018
7	5004 D Street, SE	February 2017	September 2018
8	6th St & Chesapeake St, SE	February 2017	September 2018

\* For unaccompanied, adult women