

Update on Temporary Parking Plan and Garage Design

Ward 3 ANC Meeting

October 16, 2017



A FRESH START TO ENDING FAMILY HOMELESSNESS

Agenda

- 1. Welcome and Introductions**
- 2. Temporary Parking Plan Update**
- 3. Project Design Update**
 - Share Garage Design Updates and Renderings
 - Temporary impact to Newark Street Community Garden



A FRESH START TO ENDING FAMILY HOMELESSNESS

MPD Temporary Parking Plan Overview

- The Department of General Services is constructing a new parking garage on the 2D Police Station site.
- This new parking garage will increase street parking throughout the surrounding neighborhood by concentrating officer parking on the site.
- In order to construct the parking garage, a temporary parking plan will be put in place in the neighborhood surrounding the site during construction of the garage.

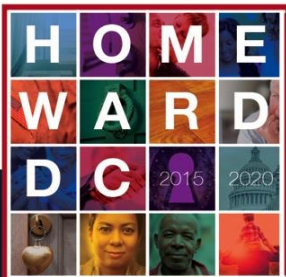


A FRESH START TO ENDING FAMILY HOMELESSNESS

Community Feedback on the Temporary Plan

In response to community feedback collected through the Ward 3 Advisory Team and during community meetings, DGS has made adjustments to the plan to ensure that it works for the neighborhood:

- Eliminated use of metered parking
- Use of Macomb Street
- Maintain use of only unrestricted spaces and no RPP Spaces
- Coordinated with DDOT and DPW for implementation and enforcement



A FRESH START TO ENDING FAMILY HOMELESSNESS

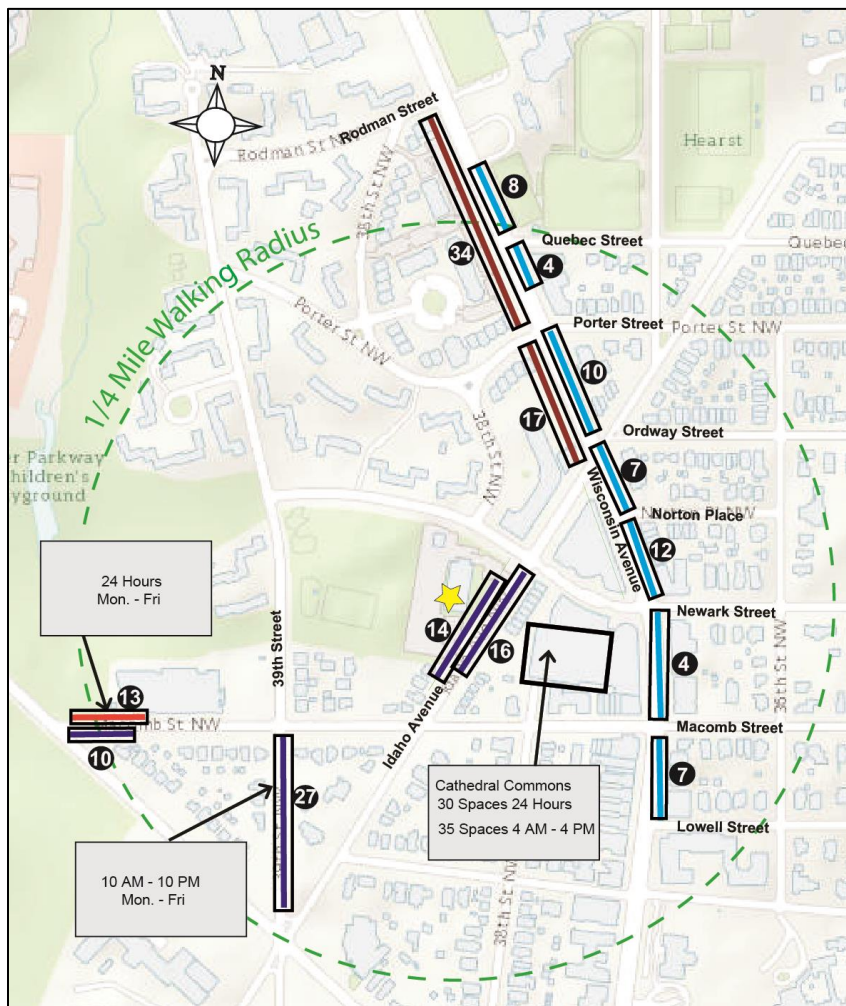
MPD Temporary Parking Plan Overview

Location	July 2017	September 2017	Notes
Cathedral Commons	30 spaces (24-hr) 35 spaces (M- F; 4AM – 4PM)	30 spaces (24-hr) 35 spaces (M- F; 4AM – 4PM)	
Wisconsin Avenue East Side	26 – 57 (unrestricted/metered) No parking from 4PM – 6:30PM Some commercial parking available weekday evenings	52 unrestricted	<ul style="list-style-type: none"> No metered spaces used for MPD All MPD spaces 24 hr No parking during rush hour
Wisconsin Avenue West Side	10 – 86 (unrestricted/metered) No parking from 7AM – 10AM Some commercial parking available mid-day and weekends	51 unrestricted	<ul style="list-style-type: none"> No metered spaces used for MPD All MPD spaces 24 hr No parking during rush hour
Idaho Avenue	20 unrestricted (plus 7 unrestricted for construction staging)	30 unrestricted	<ul style="list-style-type: none"> Previous construction staging spaces included in TPP Updated inventory
Macomb Street	N/A	23 unrestricted	<ul style="list-style-type: none"> North side (currently no parking on weekdays) No MPD parking weekends
39th Street	23 unrestricted	27 unrestricted	<ul style="list-style-type: none"> 39th Street (south of Macomb only) MPD reserved 10AM – 10PM vs. 24 hrs
TOTAL	159 - 246	161 - 248	



A FRESH START TO ENDING FAMILY HOMELESSNESS

Temporary Parking Plan



MPD

Reserved Parking Space Supply

Idaho Avenue	30
39th Street	27
Wisconsin Avenue East	52
Cathedral Commons	30
Cathedral Commons Limited	35*
Wisconsin Avenue West	51
Macomb Street	23

*Spaces available 4:00 AM - 4:00 PM Monday - Friday

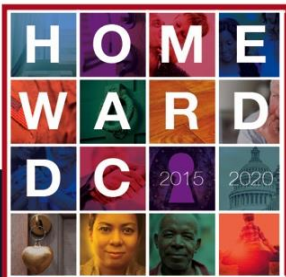
LEGEND

Current Parking Restrictions

- No Parking Restrictions
- No Parking Except Sun. 9:00 AM - 1:00 PM
- No Parking 7:00-10:00 AM M-F
- No Parking 4:00-6:30 PM M-F

- ★ Site
- Temporary Parking Areas (MPD) Available
- 13 Parking Supply per Segment

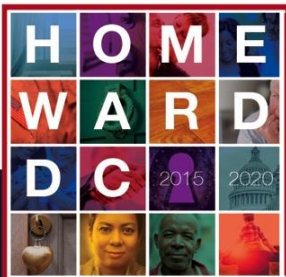
NOTE: Temporary Parking Areas Have 24-Hour Restriction Unless Otherwise Noted



A FRESH START TO ENDING FAMILY HOMELESSNESS

MPD Parking Spaces by Time of Day

	4A - 7A	7A - 10A	10A - 4P	4P - 6:30P	6:30P - 10P	10P - 12A	12A - 4A	Weekends
Idaho Avenue, NW	30	30	30	30	30	30	30	30
39th Street, NW	0	0	27	27	27	0	0	0
Macomb Street, NW	23	23	23	23	23	23	23	0
Cathedral Commons	65	65	65	30	30	30	30	30
Wisconsin East (MPD parking at all times except rush hour restrictions from 4PM to 6:30 PM)	52	52	52	0	52	52	52	52
Wisconsin West (MPD parking at all times except rush hour restrictions from 7AM - 10AM)	51	0	51	51	51	51	51	51
Total	221	170	248	161	213	186	186	163



A FRESH START TO ENDING FAMILY HOMELESSNESS

Sample Parking Signage



Wisconsin Avenue
Idaho Avenue, NW



Macomb Street, NW



39th Street, NW



A FRESH START TO ENDING FAMILY HOMELESSNESS

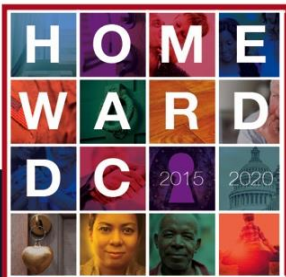
Enforcement

DGS has worked closely with DPW and DDOT on an enforcement plan that preserves parking for neighbors:

- Placard must be displayed in Special Permit Areas
- No parking (including MPD) on Wisconsin Avenue during rush hour restrictions
- Regular Meter Enforcement on Wisconsin Avenue
- Unrestricted use of 39th Street at 10PM; however, some MPD vehicles may remain during end of shift



Sample Placard



GOVERNMENT
MURIEL

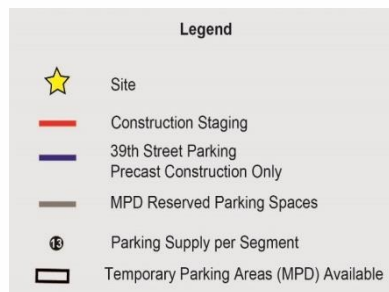


GOVERNMENT OF THE
DISTRICT OF COLUMBIA
MURIEL BOWSER, MAYOR

WARD 3 SHORT TERM FAMILY HOUSING
3320 IDAHO AVE NW, WASHINGTON, DC

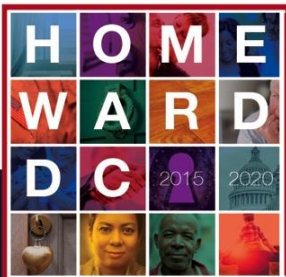
A FRESH START TO ENDING FAMILY HOMELESSNESS

Temporary Parking Plan: Pre-cast Construction Signage



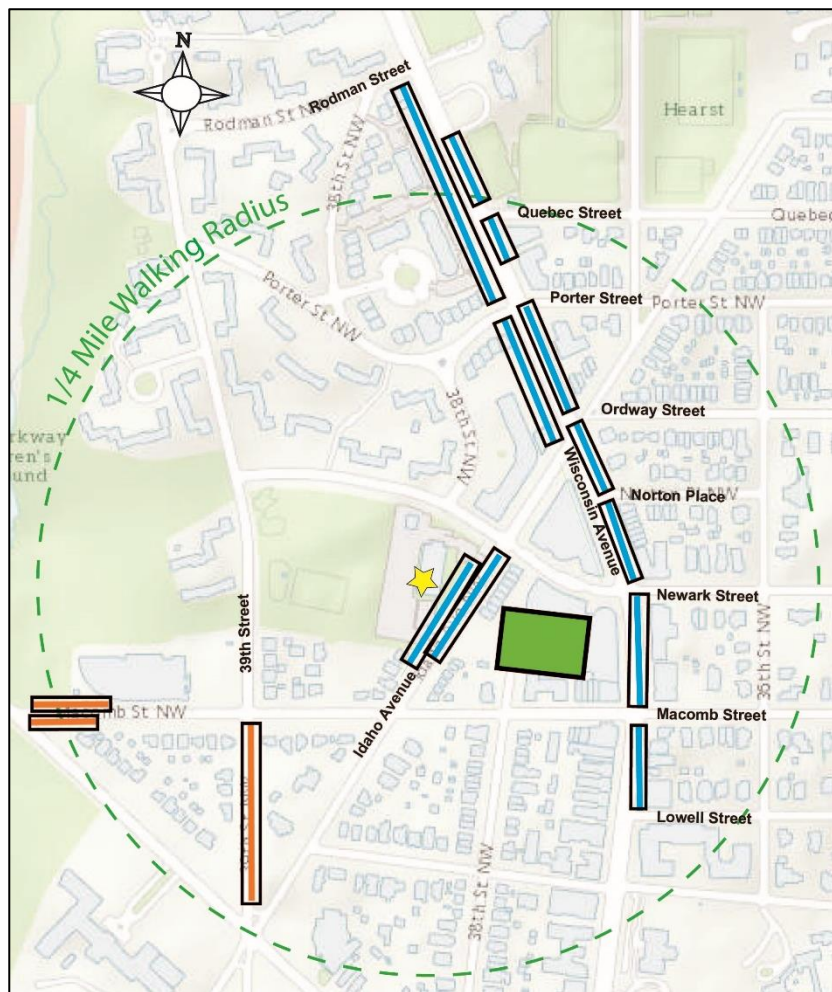
Idaho Avenue, NW
39th Street, NW

- 9 MPD spaces on Idaho Avenue needed for Pre-Cast delivery
- Six week precast construction schedule
- 8 temporary short-term spaces to be reserved on 39th Street – north of Macomb Street
- 24 hours
- Temporary Signage during pre-cast installation (six weeks)



A FRESH START TO ENDING FAMILY HOMELESSNESS

Temporary Parking Plan: Implementation



Phasing Plan

Phase I

Cathedral Commons full time and part time

Phase II

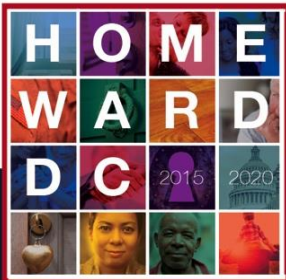
Wisconsin Avenue and Idaho Avenue

Phase III

39th Street and Macomb Street

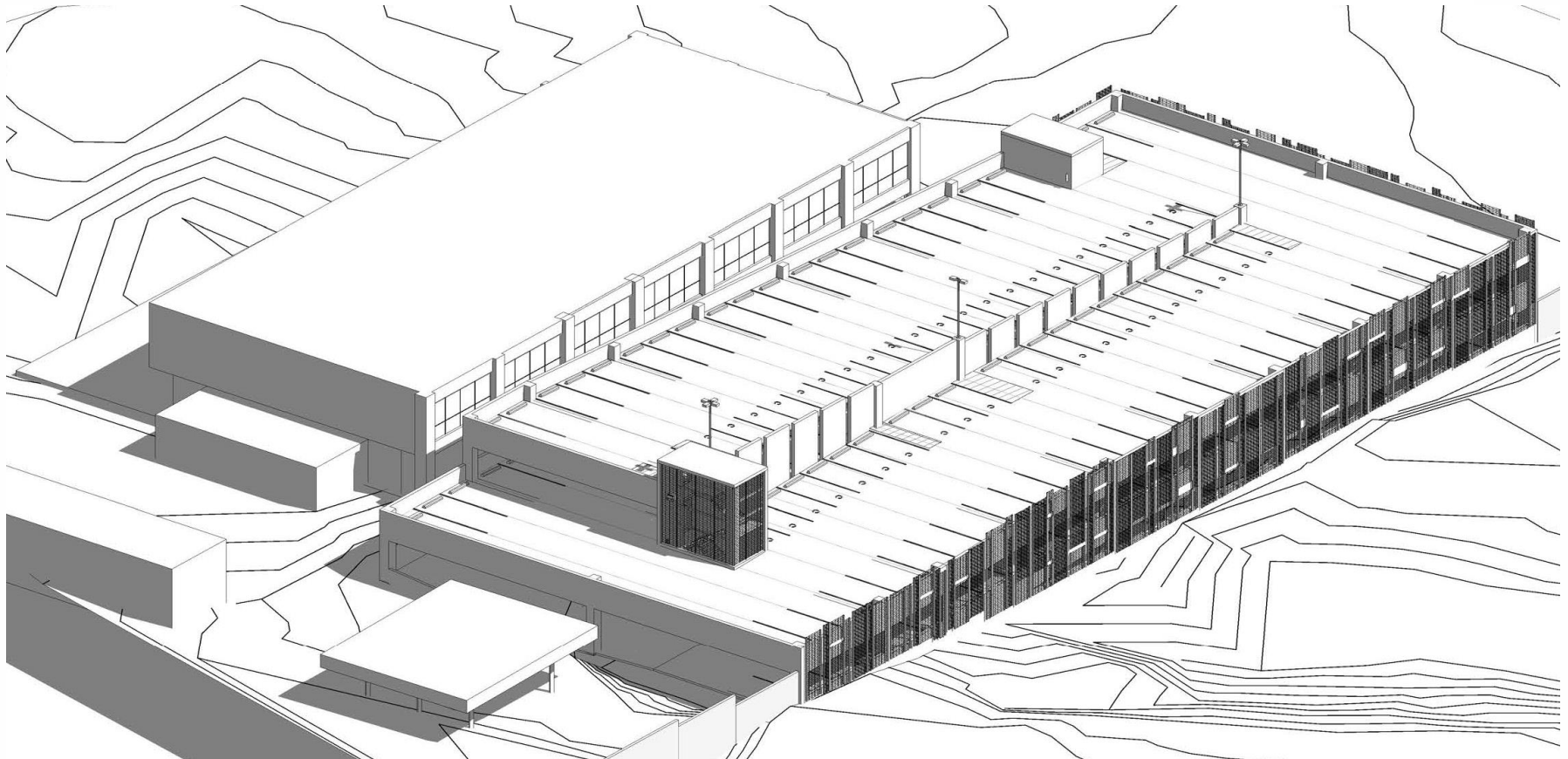
Legend

- ★ Site
- Phase 1
- Phase 2
- Phase 3



A FRESH START TO ENDING FAMILY HOMELESSNESS

Garage Design Update

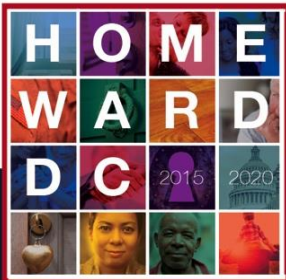




A FRESH START TO ENDING FAMILY HOMELESSNESS

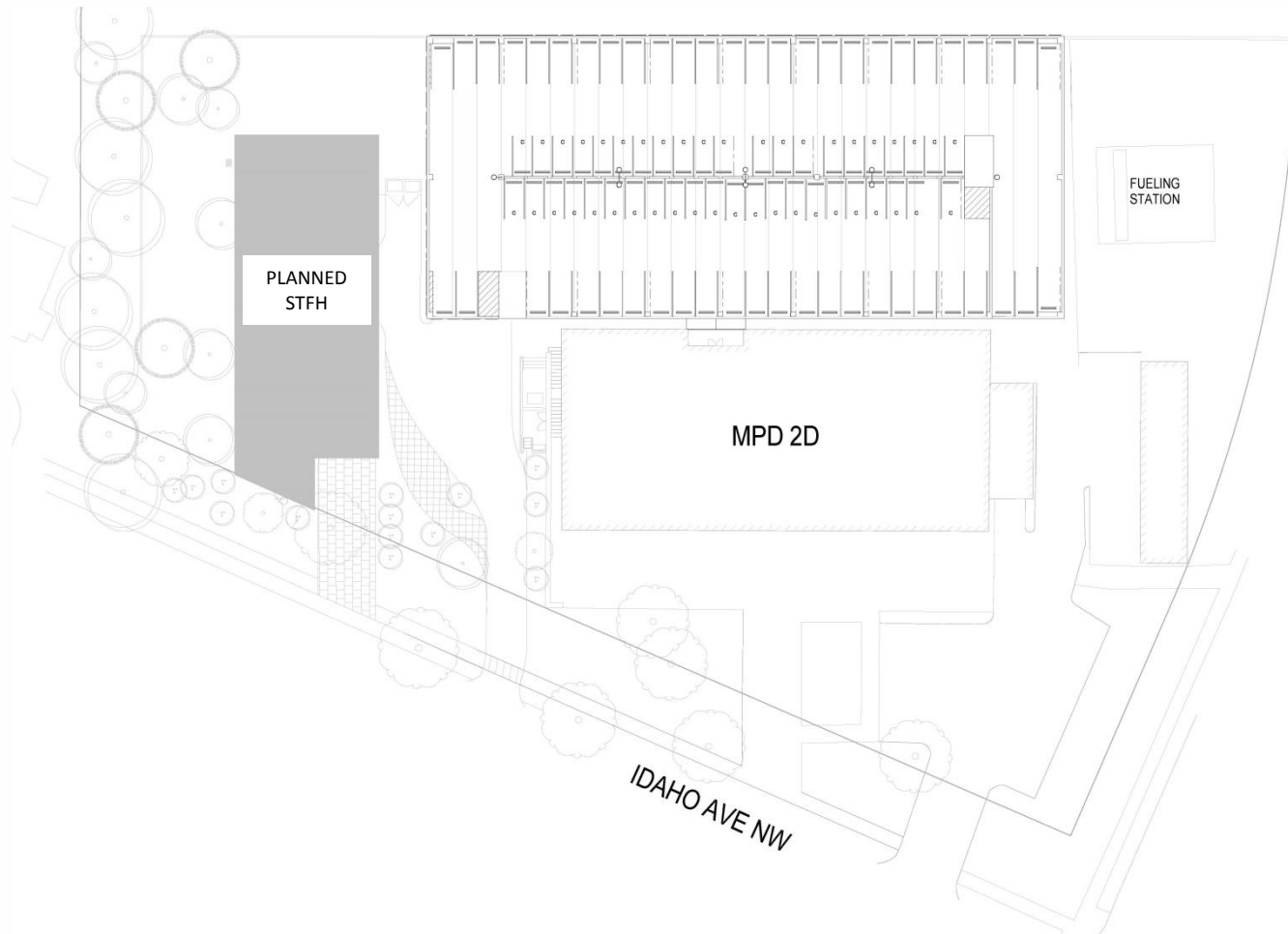
Draft Rendering

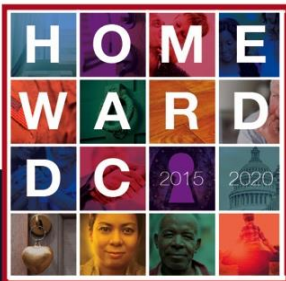




A FRESH START TO ENDING FAMILY HOMELESSNESS

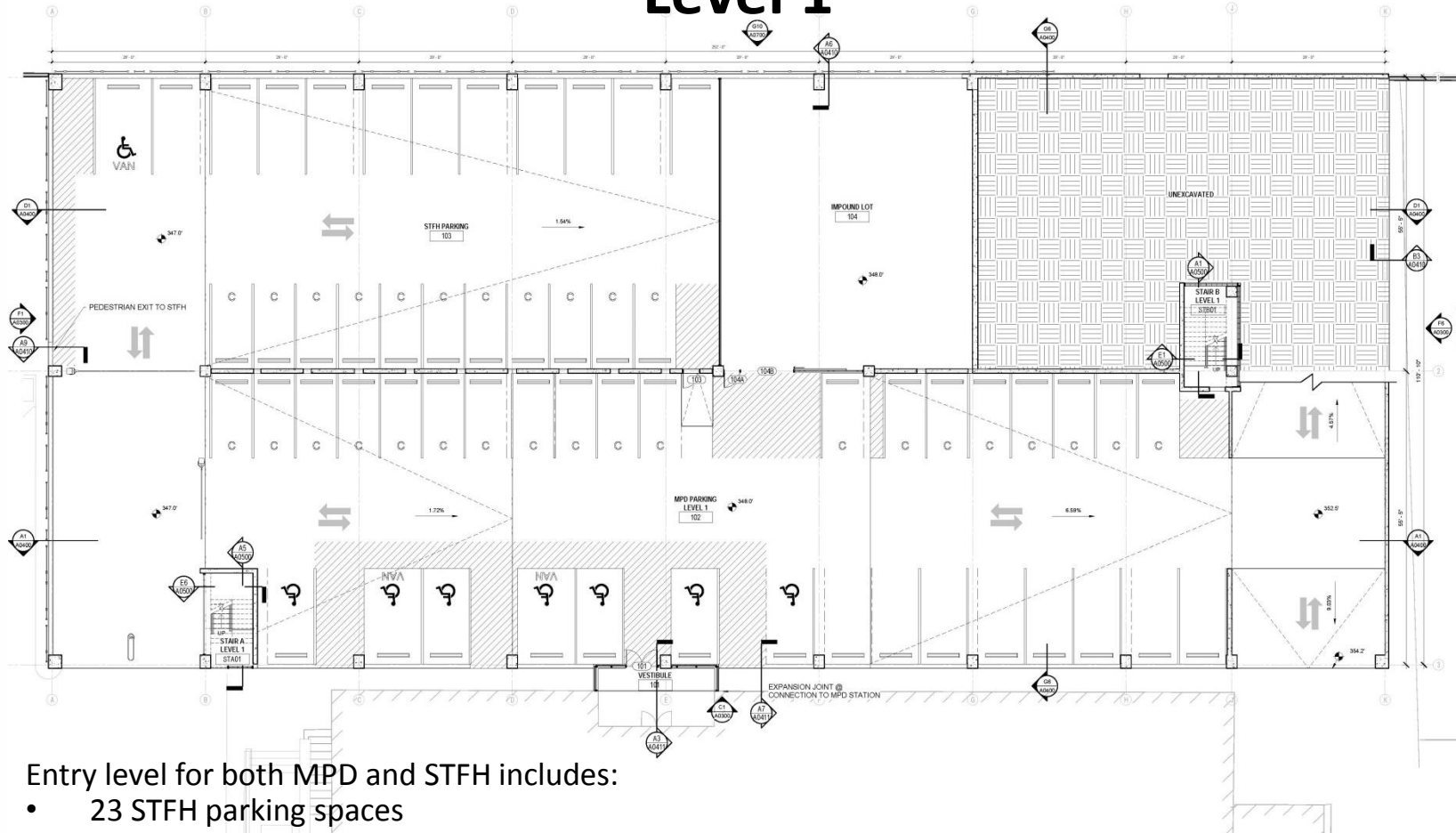
Site Plan





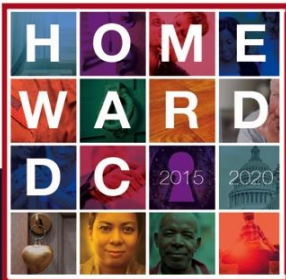
A FRESH START TO ENDING FAMILY HOMELESSNESS

Level 1



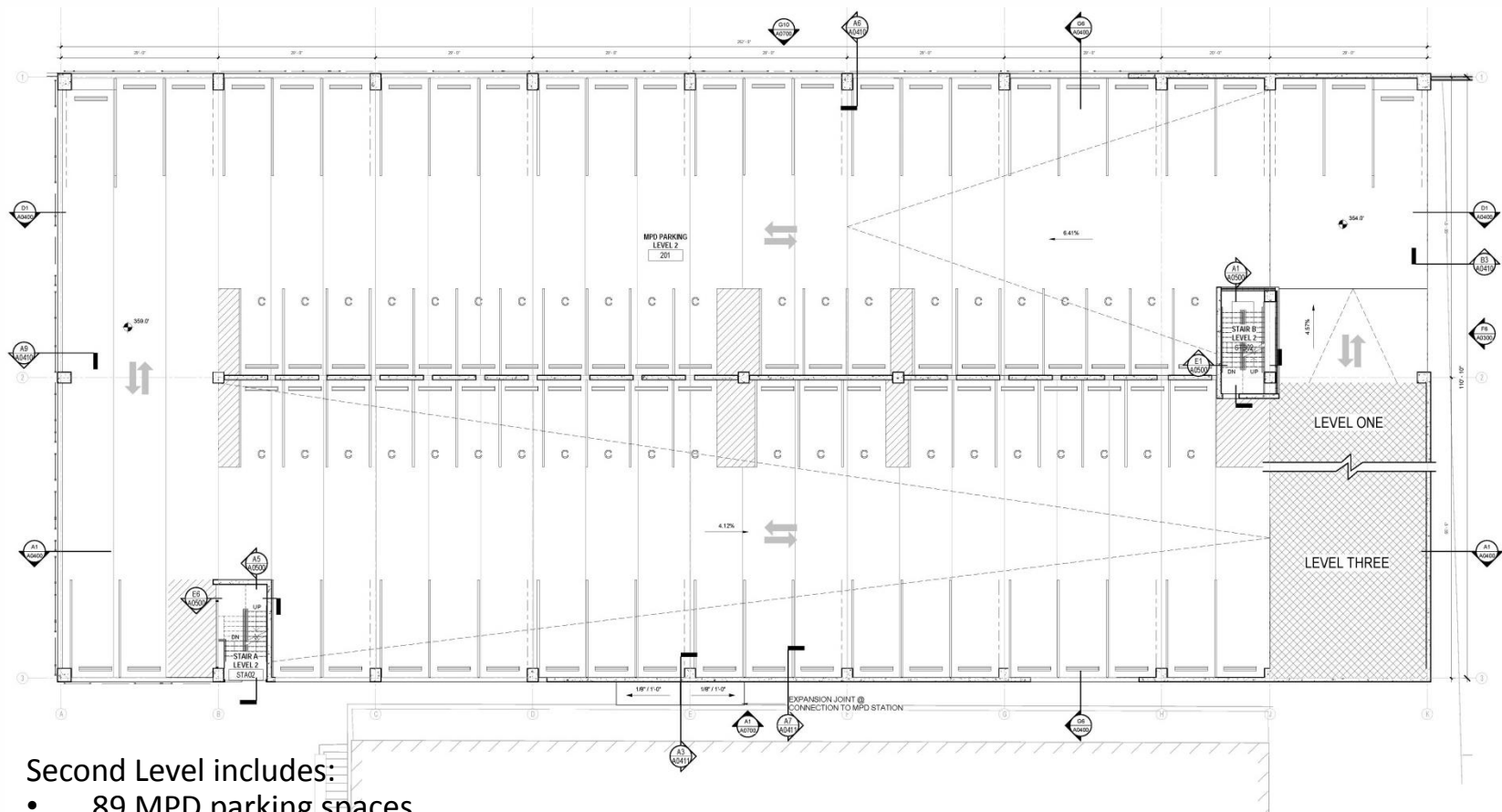
Entry level for both MPD and STFH includes:

- 23 STFH parking spaces
- 34MPD parking spaces
- 2600 Sf for MPD Impound lot



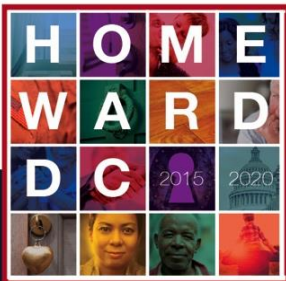
A FRESH START TO ENDING FAMILY HOMELESSNESS

Level 2



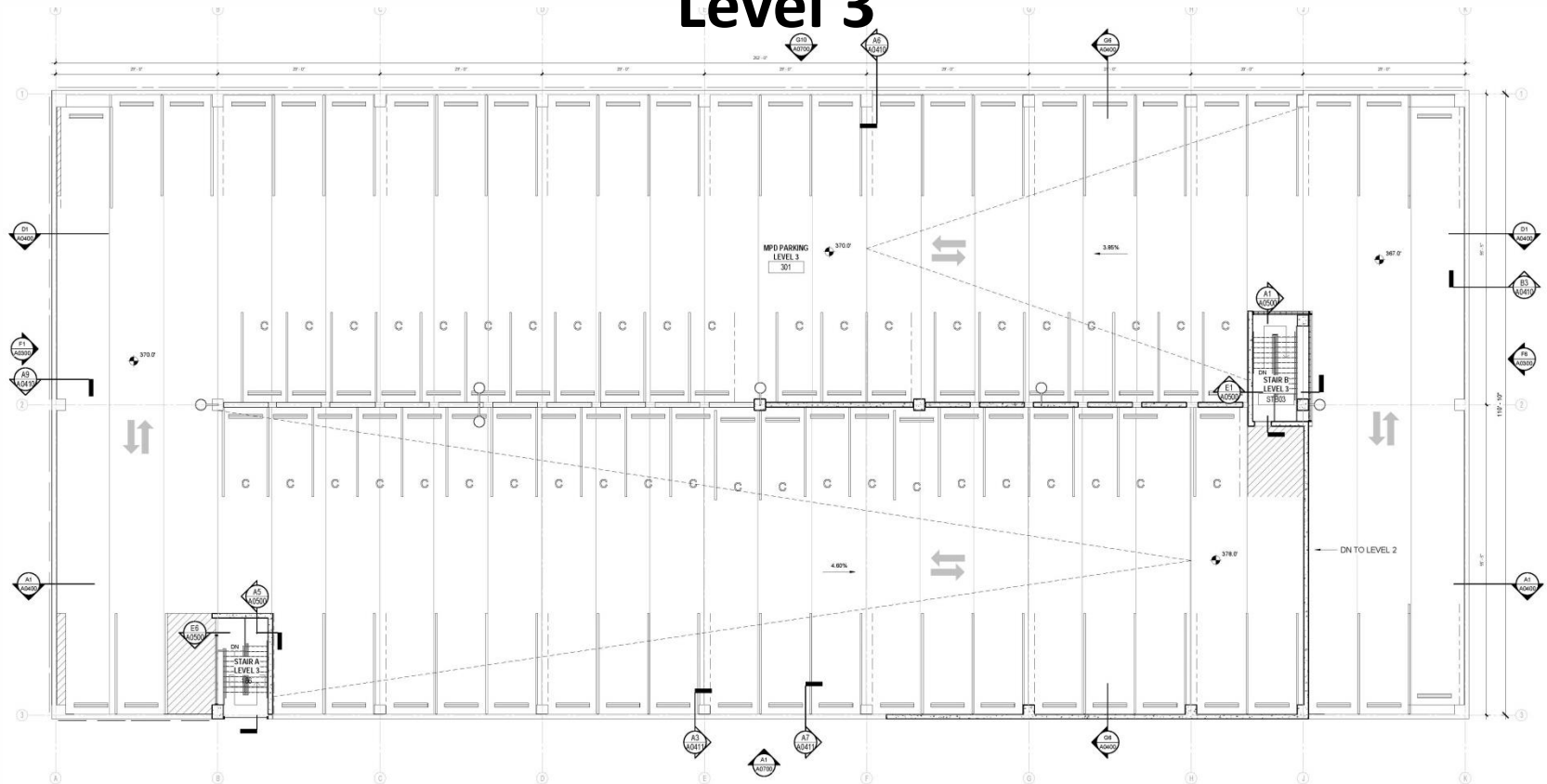
Second Level includes:

- 89 MPD parking spaces



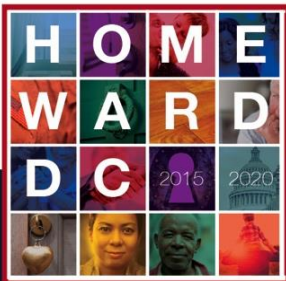
A FRESH START TO ENDING FAMILY HOMELESSNESS

Level 3



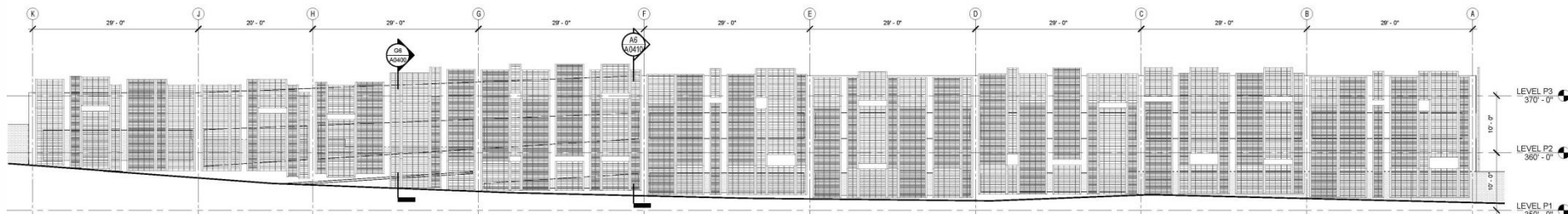
Third Level includes:

- 93MPD parking spaces

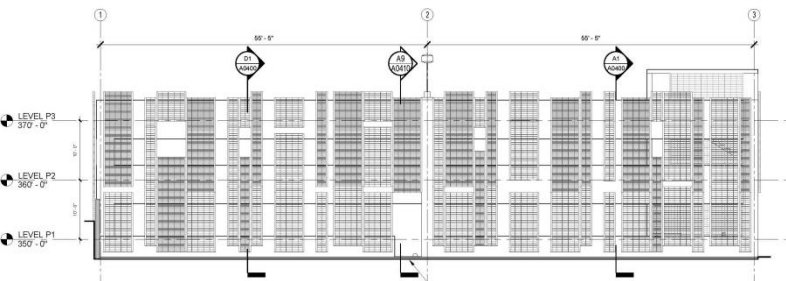


A FRESH START TO ENDING FAMILY HOMELESSNESS

Elevations



West Elevation



South Elevation





A FRESH START TO ENDING FAMILY HOMELESSNESS

Green Screen

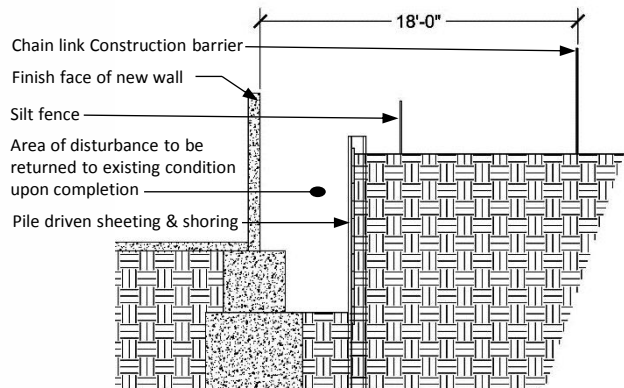
DGS will be building the garage with a green screen wall that will face the Newark Street Community Garden to provide opportunities for vertical horticulture.



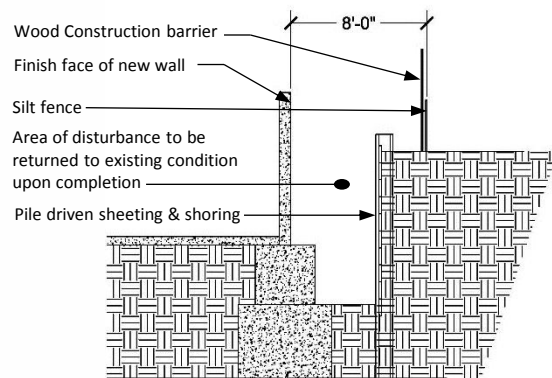


A FRESH START TO ENDING FAMILY HOMELESSNESS

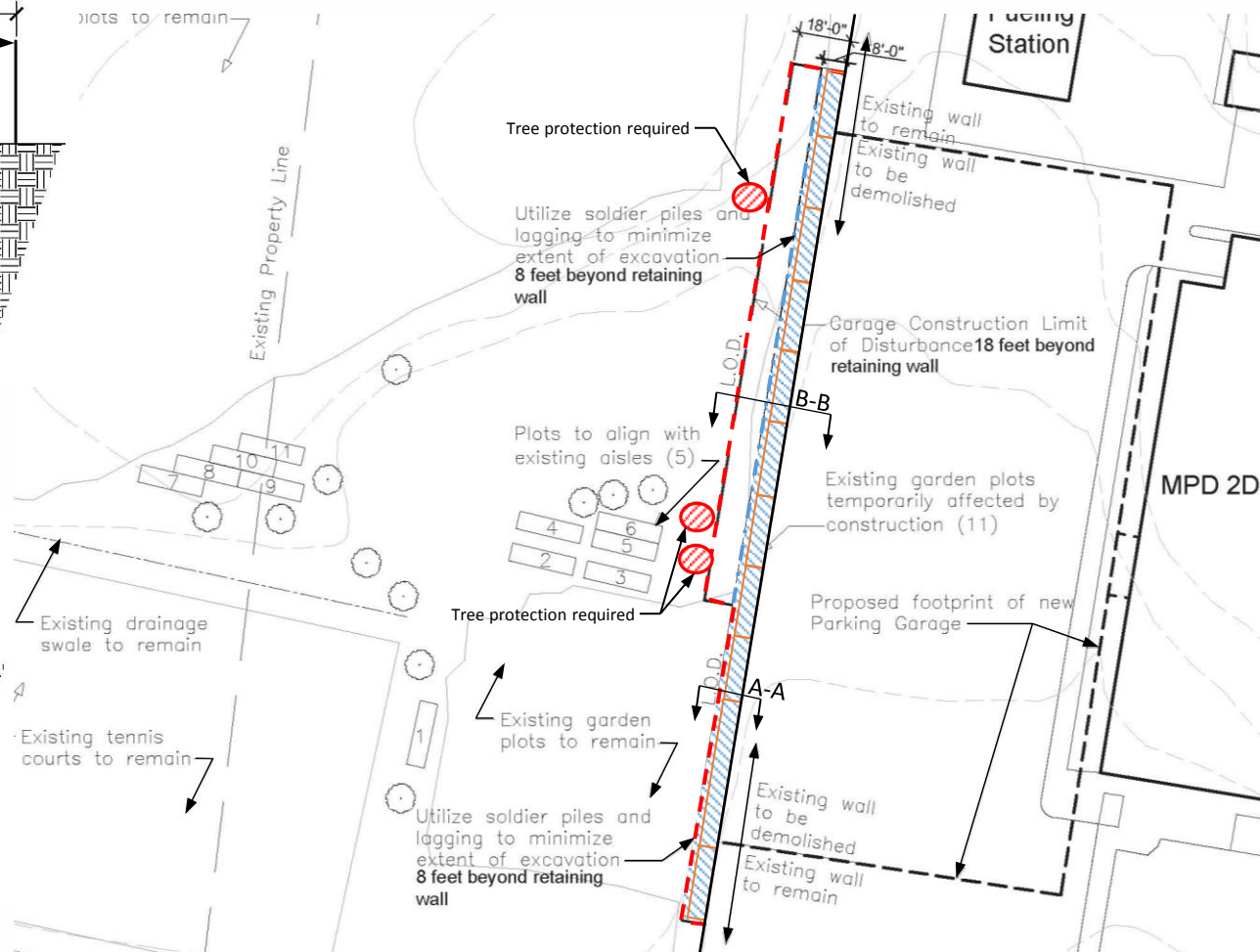
Limits of Disturbance



Section B-B



Section A-A





A FRESH START TO ENDING FAMILY HOMELESSNESS

Limits of Disturbance





A FRESH START TO ENDING FAMILY HOMELESSNESS

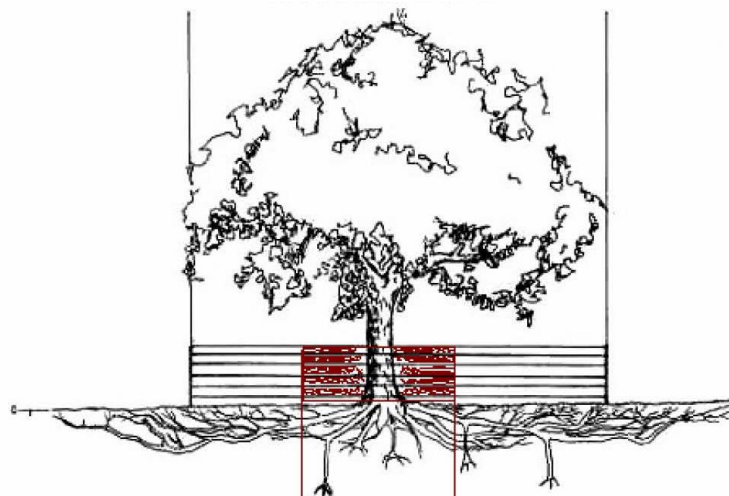
Newark Street Community Garden Engagement

1. Coordinate with Garden President to develop garden bed relocation plan, assess plant types, and best practices
 - DGS, Smoot Construction, Ayers Saint Gross, DMHHS, DHS and Ward 3 MOCR's have met with the Garden President and reviewed the temporary impact the gardens, and have conducted site visits.
2. Confirm proposed plot relocation plan
 - Garden President requested a three week notice before the plot owners need to relocate there plants, which DGS will meet.
3. Have the plots relocated prior to wall demolition
 - New plots would be in place for relocation prior to demolition of the retaining wall.
4. Engagement starting next week
 - Communication and coordination with the garden President and the gardeners will be on going until completion of the Garage Structure.



A FRESH START TO ENDING FAMILY HOMELESSNESS

Tree Protection



Tree Protection Fence

- Walked the site with Urban Forestry Administration (UFA) representative and confirmed none of the trees fall in the Limits of Disturbance.
- UFA recommended providing tree protection for tree closest to the Limits of Disturbance fence (3 trees) and ensure any disturbance be limited to 6' from the tree trunk.
- Protect the *Critical Root Zone* by erecting chain link fencing which protects the tree and root system by keeping out all detrimental construction activity
- Chain link Construction Fence installed at the LOD. Post will be driven into the soil and privacy screen or slats will be installed



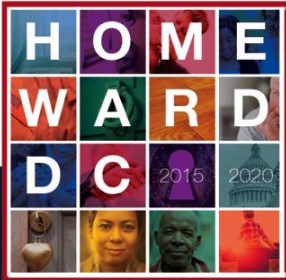
Construction LOD Fence



A FRESH START TO ENDING FAMILY HOMELESSNESS

Garage Constructions Timeline

- Pre-construction begins (Fall 2017)
 - Fall 2017 (October/November/December)-Mobilization; Site Controls; E&S control measures, auger pile testing
- Active Construction begins (Winter 2017)
 - Winter 2018 (January/February/March) – Foundations, Precast, Doors & frames
 - Spring 2018 (April/May/June) – MEP, Site work, Green Screen, Close out
- Temporary parking measures conclude June 2018



A FRESH START TO ENDING FAMILY HOMELESSNESS

Communication During Construction

Brian Van Hoven

STFHprojects.DGS@dc.gov